



asiantaeth ynni  
**SevernWye**  
energy agency

# Health, Housing and Fuel Poverty

Dr Simone Lowthe-Thomas

## MISSION



To eliminate fuel poverty and the impacts of cold homes on health and wellbeing  
To improve the energy efficiency of buildings, new and old

## WE WORK TO BENEFIT



Householders and their families  
Businesses  
Property owners

Energy solutions for  
sustainability and wellbeing  
*now, and for the future*

Empowering communities  
*now, and for the future*

## MISSION



To help communities use local resources to tackle inequality, maintain wellbeing, protect the environment and build a sustainable future  
To promote sustainable development and inspire local action

## WE WORK TO BENEFIT



Communities of place  
Communities of interest or practice  
Schools  
Community organisations  
Businesses

## MISSION



To use robust analysis of on-the-ground experience to identify policy gaps and influence policymaking for the benefit of community wellbeing and the environment  
To support the creation of sustainable services by embedding principles of co-production and collaboration into policymaking

## WE WORK TO BENEFIT



Public sector services  
Policymakers at local and national levels

People at the heart of policy  
*now, and for the future*

Making technology work for  
people *now, and for the future*

## MISSION



To inform, pilot and deliver the benefits of new sustainable and smart energy technologies and processes  
To offer design services and provide user support to improve the uptake and outcomes from new sustainable energy models

## WE WORK TO BENEFIT



Industry  
Academia  
Service and delivery providers



# Some of the things we've done...

- Target 2050 – Stroud Council funded - Housing Retrofit pilot – 250 homes surveyed, over 100 installed measures, 10 deep retrofit case studies, Pay-As-You-Save pilot for UK government lead to new finance scheme, installers network and behaviour change support guidance.
- Welsh Government – Ynni'r Fro, Resource Efficiency Wales, Cynefin, Arbed
- National Lottery Community Fund – Rural poverty, In-work Poverty
- Target 2020 – Advice and support for SMEs
- Agriculture – Anaerobic Digestion & Biogas Research/Pilots
- Education – Schools, Prisons, Training, Skills, RSLs
- Technology – Smart GB project with elderly

# Fuel Poverty - some specific challenges:

- Increasing the levels of knowledge & understanding – political priority
- Making Fuel Poverty a wider priority
- Understanding the specific challenges of Rural Fuel Poverty
- Joining up Fuel Poverty, Zero Carbon and other priority areas
- Targeting – reaching those most in need first – filling the gaps
- Making the current grant schemes work – piecemeal and restricted
- Rolling and Replicating with confidence
- Linking Health, Housing and Fuel Poverty

## The full cost of poor housing

Mike Roys, Simon Nicol, Helen Garrett and Susie Margolis



“Many studies have investigated the relationship between housing and health but, because of the number of intervening variables, it has been difficult to demonstrate clear and measurable cause and effect relationships. Nevertheless, there is a large and growing body of evidence linking systematically adverse health effects with poor housing conditions. These conditions include dampness, the effects of living in a cold home, household accidents, noise, insecurity, overcrowding and fire safety”.



- It is estimated that leaving vulnerable people living in the poorest 15% of England's housing is costing the NHS £1.4 billion each year in first-year treatment costs.
- This risk is comparable to the burden to the NHS of other health hazards, such as smoking and alcohol consumption.

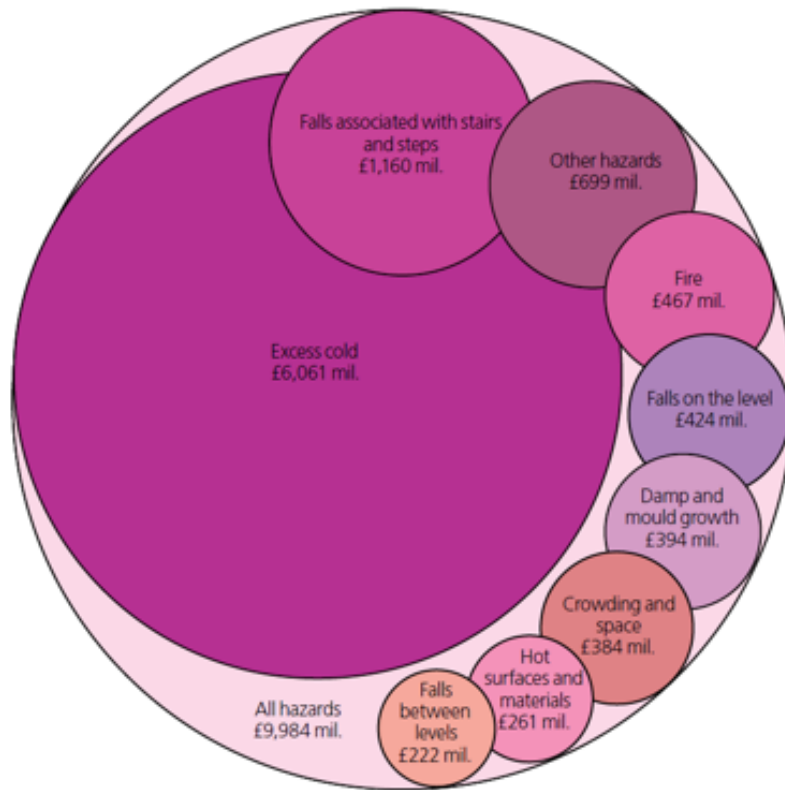


Figure 3: The cost of dealing with HHSRS Category 1 hazards<sup>[4]</sup>

- The cost of dealing with the causes of excess cold clearly outweigh those of other Category 1 risks
- It is essential that funding is leveraged in from the energy sector to help cover these costs
- This adds value to any financial support from health partners and means more people are lifted out of fuel poverty

# Health, Housing and Poverty – Finding a way

- Making the existing grant schemes join-up and offer flexibility
- Responding to need – engaging with those in Fuel Poverty
- Find funding sources to cover the funding gaps
- Offer security and reassurance to funders
- Provide a quality, reliable and easy-access service for the householders
- Find ways to identify and engage directly with the most in need
- Evidence the approach and outcomes
- Opportunity for feedback, learning and share

# An integrated approach that works for all

## Building on our Existing Foundations:

- Platform to build on – trusted energy advisors and experts (retrofit coordinators)
- Knowledge of local areas and those in Fuel Poverty
- Reliable and local installers (also some larger installers...)
- Access to grants – working in partnership with the Local Authorities
- Installation and energy use/behaviour support

## Creating New Partnerships:

- Health funding to top-up and level in additional energy grant funding
- Linking to Health to target those with health conditions
- Linking to other support organisation for cross-referrals

## GOVERNMENT FUEL POVERTY SCHEMES

### ECO Funding

- ▶ Energy efficiency measures
- ▶ Heating solutions
- ▶ Various criteria

### Warm Homes Fund

from Affordable Warmth Solutions

CAT 1

- ▶ First-time central heating for homes on the gas grid

CAT 2

- ▶ Alternative heating solutions for off-gas areas

## HEALTH

with top-up funding from

**NHS**  
**Gloucestershire**  
 Clinical Commissioning Group

CAT 3

- ▶ Specific energy solutions for health conditions

## WIDENING OUR REACH

- ▶ *Park Homes* with the CCG and District Councils
- ▶ *Community Outreach* with Community Wellbeing Team from local charity



- ▶ *Innovation pilots* with EU funding as catalyst



**ASSIST**  
 ZGETHER



Provides an integrated package of support for those in fuel poverty or suffering ill-health due to cold, damp, poorly ventilated homes by **joining up** available schemes to close the funding gaps.

a fitter home for a healthy future

Domestic Energy Advice Line

Local Installer Network

Qualified Energy Advisors

Qualified Domestic Energy Surveyors

Community Outreach Officers





a fitter home for a healthy future



FREE energy advice line  
Monday – Friday 9am to 5pm

0800 500 3076

# Keep warm, healthy & save money at home

## Our charity offers...

- Free energy efficiency advice
- Free home energy advice visits\*
- Insulation and heating grants\*
- Health related grants\*
- Renewable energy information

\*All offers of funding are subject to survey, eligibility and funding availability

## We can help you...

- Save energy in your home
- Reduce your fuel bills
- Switch energy supplier
- Find local installers & tradespeople

Email: [warmandwell@severnwye.org.uk](mailto:warmandwell@severnwye.org.uk)

Visit: [www.warmandwell.co.uk](http://www.warmandwell.co.uk)



@WarmAndWell



Warm and Well is managed on behalf of the local authorities in Gloucestershire and South Gloucestershire by the charity Severn Wye Energy Agency (No 1083812)

## Warm & Well

- 2018/2019 Figures:
- 2548 householders received advice
- 75% had a Health Condition (Asthma, COPD, Cancer, Cardio Vascular, Arthritis and mobility being common)
- 638 Energy Efficiency Measures installed in 556 homes
- 185 Central Heating Systems installed
- Referrals to other support e.g. Citizens Advice, Water, PSR etc.

# Park Homes Insulation

- The need to help residents in park homes was identified by Severn Wye working together with the Clinical Commissioning Group. Higher rates of health issues were shown to correlate with park home addresses.
- There is a lack of funding from Eco and other National Schemes
- Funding was sourced from local authorities and now 66 park homes in Gloucestershire have been insulated in the past year.

## Warm Homes Fund Cat 1 & 2

- Since December 2017
- **321** first-time central heating systems with another
- **354** systems in progress
- We support householders through the process
- Cat 2 – A real Challenge... off-grid, hard-to-treat properties where the only affordable technologies are currently Air Source Heat Pumps or LPG

# Case studies – Warm Homes Fund

- Mr and Mrs Hill were struggling to keep on top of heating bills, relying on prepaid cards to cover electricity, and only being able to afford to heat one room in the coldest months.
- “This was this first winter where we honestly thought ‘this is too much’ – we couldn’t cope. We had decided that whatever happened, we needed to change something in time for this winter. We could only afford to heat one room, and spent a lot of time in the kitchen with the oven on.”
- “This is honestly the best thing anybody has ever given us. We were frightened about the winter and at times, did not want to go on. To hear that we were eligible for this system was the most wonderful thing and it will change our lives.”



# Warm Homes Fund Cat 3



## Energy Advocate

- Energy Redress Scheme
- Energy Advisor embedded within a Community Well-being team
- Referrals made directly through Social Prescribing
- Support to most vulnerable in society through trusted partner
- Being replicated



Evidencing the Benefits:

This joint approach gives leverage

Putting trusted experts directly in contact with the most vulnerable makes the difference

Apr 2017- Mar 2019



948

Total number of measures installed



4,194

Households advised



17,789t

Lifetime tCO2 savings from insulation measures



488 home visits

identifying £115,951 potential savings per year



£6.53

For every £1 investment into W&W core costs by the LAs, £6.53 is spent on energy efficiency measures



674

Frontline staff trained to spot the signs of fuel poverty



£4.5M

Estimated lifetime savings for clients achieved in 18/19\*



9:1

External funding leveraged in (ECO/WHF) using local health funding (CCG/ Public Health)



£1.15M

Lifetime savings to the NHS from 129 central heating installs\*\*



£20.4M

Lifetime savings to society from 129 central heating installs\*\*\*

\* Estimated using ECO deemed scores

\*\* Calculations from BRE using pre and post SAP scores, £95,835 multiplied by lifetime of system = 12 years

\*\*\*Calculations from BRE using pre and post SAP scores, £1.7M multiplied by lifetime of system = 12 years

# Case studies – Energy Advocate

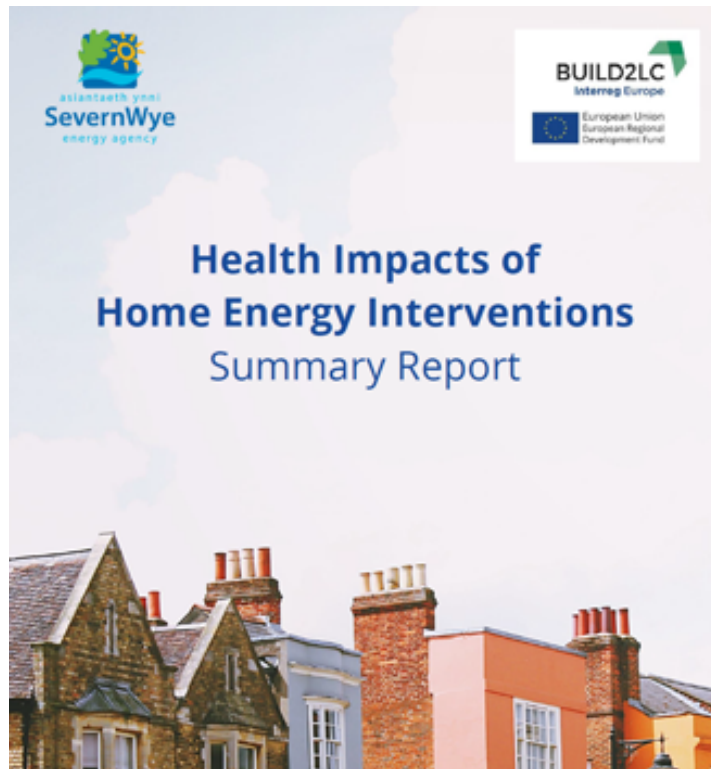
- Mrs R phoned the Community Wellbeing Team for referral to the Energy Advocate for urgent help following a £1354.72 debt on her energy bill. She had no idea where this amount had come from and had received threatening letters stating that a debt collection agency was coming to collect money or goods.
- After trying to deal with the energy company direct on several occasions but being ‘fobbed off’ Mrs R was distraught. ‘I was left feeling frightened to use any appliances or heating, and felt hounded and terrified that someone was going to come and take away my belongings’.
- The Energy advocate called the energy company and started investigating. The end result was there had been error of £1354.72 which was not owed.
- The debt was wiped and it was found that the clients account was actually in credit by over £241.00

*“We know that good housing is essential to health and wellbeing. It also plays a crucial role in supporting other determinants of good health such as educational attainment, employment prospects and social interaction”*

- Professor Kevin Fenton, National Director of Health and Wellbeing  
**Public Health England**

# Build2LC

- Match-funded by Interreg Europe
- Learning from EU partners
- In-depth report commissioned on health impacts
- Encouraging partnership work across Gloucestershire



# Learning, Recommendations and Asks:

Key Question – can this be replicated? Yes but...but make it can be less complicated

Eligibility Criteria review & what to measure as a success criteria

Encourage and enable locally developed solutions to reflect place – to enable targeting and greater collaboration

Investment into developing the right solution and allowing more time results in better outcomes – culture, visual

We need greater flexibility to allow more creative solutions to integrate decarbonisation to these approaches

Ventilation and overheating increasingly important

*Thanks for listening!*