



centre for sustainable energy

We help people change
the way they think and
act on energy.

cse.org.uk



Slow cooked ideas to build energy resilience in deprived communities



Ellie Stevens and Nicky Hodges



The problem





Project aims

- Trial community development led approach in 3 communities to build skills, confidence and capacity to change approach to energy
- Identify what processes and resources work in deprived communities
- Develop replicable processes which communities and agencies can use to build community energy action in similar communities in England and Wales.



Three communities

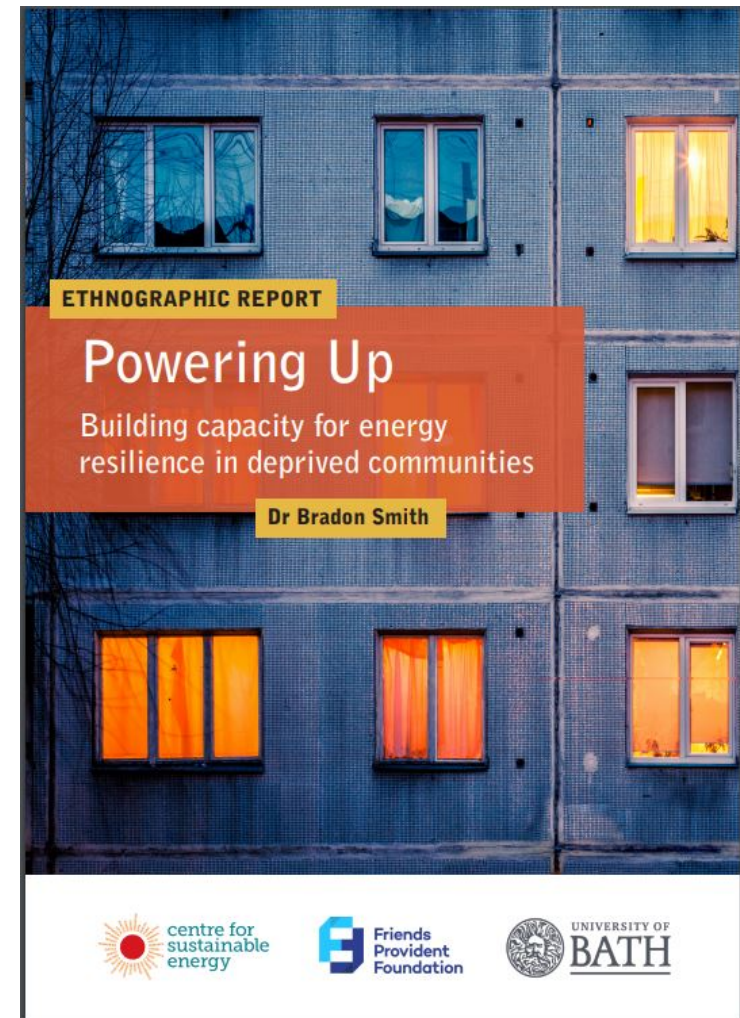
- Hamp in Bridgewater
- Duffryn in Newport
- Penhill in Swindon





Ethnography findings

- Energy reduction isn't a priority
- 'Energy literacy' better than anticipated
- Renewables are a hot topic!
- Scepticism about fairness





Community Engagement





Engaging with intermediaries





Building capacity and skills

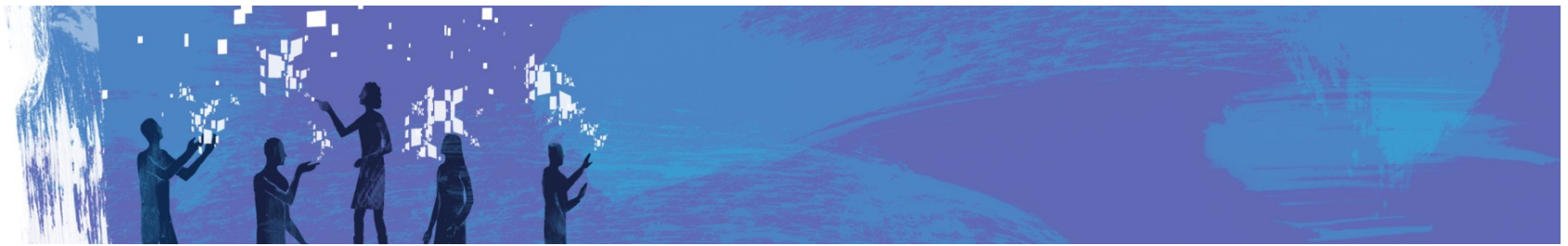
- Training on energy efficiency and social media campaigning
- Co-delivering events





Reality check for more ambitious aims





Capturing and sharing learning

- Learning log
- Interviews
- Blogs
- Toolkit??
- Sharing with others



Thank you

Ellie.stevens@cse.org.uk

Nicky.hodges@cse.org.uk

www.cse.org.uk | Twitter: [@cse_communities](https://twitter.com/cse_communities)